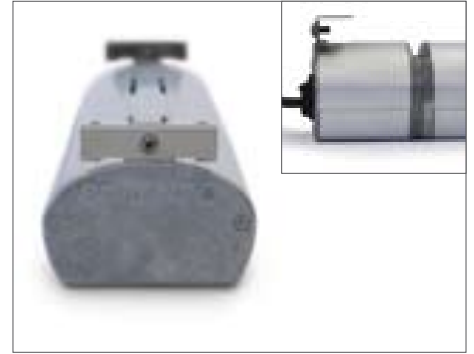


## Quartz Heat Lamp Assemblies



Standard mounting bracket available on standard and fabricator models



Roband quartz heat lamp assemblies are manufactured from an exclusive extruded anodized aluminium section, specifically designed to breathe.

For use in either front or back of house, these units come fitted with quartz halogen globes engineered to give a balance of heat and light. These globes have a unique screw-mounted tail connection that prevents terminal corrosion and hot joints, thus increasing globe longevity. All units are fitted with toughened safety glass covers over each light.

### Standard Models

The standard heat lamps (e.g. HQ450) come with a control box that houses the isolating on/off switch. They also feature a simple mounting system and come complete with a 10 Amp plug and cord.

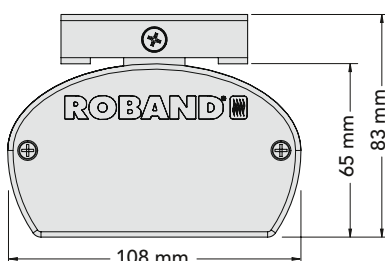
### Fabricator Models

The lamps are also available without the control box and on/off switch (e.g. HUQ375) so they can be connected to a remote switch setup. The removal of the control box shortens the length of the lamp assembly accordingly. These HUQ models come with the standard mounting mechanism, or can be ordered with your choice of square or round 19 mm (outside dimension) tubular mount. (Tube not supplied)

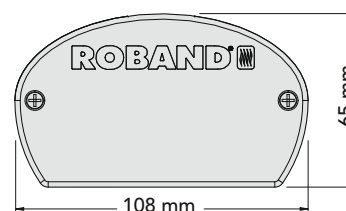
Square mount available on fabricator models only



Round mount available on fabricator models only



Dimensions for standard quartz heating, fluorescent lighting and infra-red heating assemblies (HQ, HF & HE).



Dimensions for fabricator quartz heating and infra-red heating assemblies (HUQ & HUE).

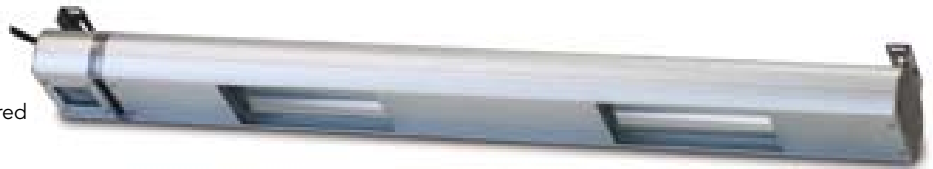
## Quartz Heat Lamp Assemblies

### SPECIFICATIONS - STANDARD MODELS (INCLUDES CONTROL BOX)

MODEL	DESCRIPTION	MOUNT TYPE	ELEC CON. Amps	POWER Watts	LENGTH mm	LAMP CENTRES*	INCLUSIONS
HQ450	1 lamp in body	Standard	10	350	450	N/A	Switch, plug & cord
HQ900	2 lamps in body	Standard	10	700	900	400	Switch, plug & cord
HQ1200	3 lamps in body	Standard	10	1050	1200	345	Switch, plug & cord
HQ1500	4 lamps in body	Standard	10	1400	1500	345	Switch, plug & cord
HQ1800	4 lamps in body	Standard	10	1400	1800	400	Switch, plug & cord
HQ2100	5 lamps in body	Standard	10	1750	2100	400	Switch, plug & cord

\*Length between centres of each lamp.

HQ900 pictured



### SPECIFICATIONS - FABRICATOR MODELS (NO CONTROL BOX)

MODEL	DESCRIPTION	MOUNT TYPE	ELEC CON. Amps	POWER Watts	LENGTH mm	LAMP CENTRES*	INCLUSIONS
COMPLETE WITH A, N & E WIRE IN PTFE 500 MM IN LENGTH FOR INSTALLATION AND REMOTE CONTROL							
HUQ375	1 lamp in body	Standard	10	350	375	N/A	N/A
HUQ375+S	1 lamp in body	Square	10	350	375	N/A	N/A
HUQ375+R	1 lamp in body	Round	10	350	375	N/A	N/A
HUQ825	2 lamps in body	Standard	10	700	825	400	N/A
HUQ825+S	2 lamps in body	Square	10	700	825	400	N/A
HUQ825+R	2 lamps in body	Round	10	700	825	400	N/A
HUQ1125	3 lamps in body	Standard	10	1050	1125	345	N/A
HUQ1125+S	3 lamps in body	Square	10	1050	1125	345	N/A
HUQ1125+R	3 lamps in body	Round	10	1050	1125	345	N/A
HUQ1425	4 lamps in body	Standard	10	1400	1425	345	N/A
HUQ1425+S	4 lamps in body	Square	10	1400	1425	345	N/A
HUQ1425+R	4 lamps in body	Round	10	1400	1425	345	N/A
HUQ1725	4 lamps in body	Standard	10	1400	1725	400	N/A
HUQ1725+S	4 lamps in body	Square	10	1400	1725	400	N/A
HUQ1725+R	4 lamps in body	Round	10	1400	1725	400	N/A
HUQ2025	5 lamps in body	Standard	10	1750	2025	400	N/A
HUQ2025+S	5 lamps in body	Square	10	1750	2025	400	N/A
HUQ2025+R	5 lamps in body	Round	10	1750	2025	400	N/A

\*Length between centres of each lamp.

HUQ825 pictured



Fabricator model showing wiring extending from the square mount.



Note: For HUQ Heat lamp models, mounts are available individually to suit 19 mm square tube and 19 mm round tube (outside dimensions).  
For Square: add +S to end of model number and Round: add +R to end of model number.